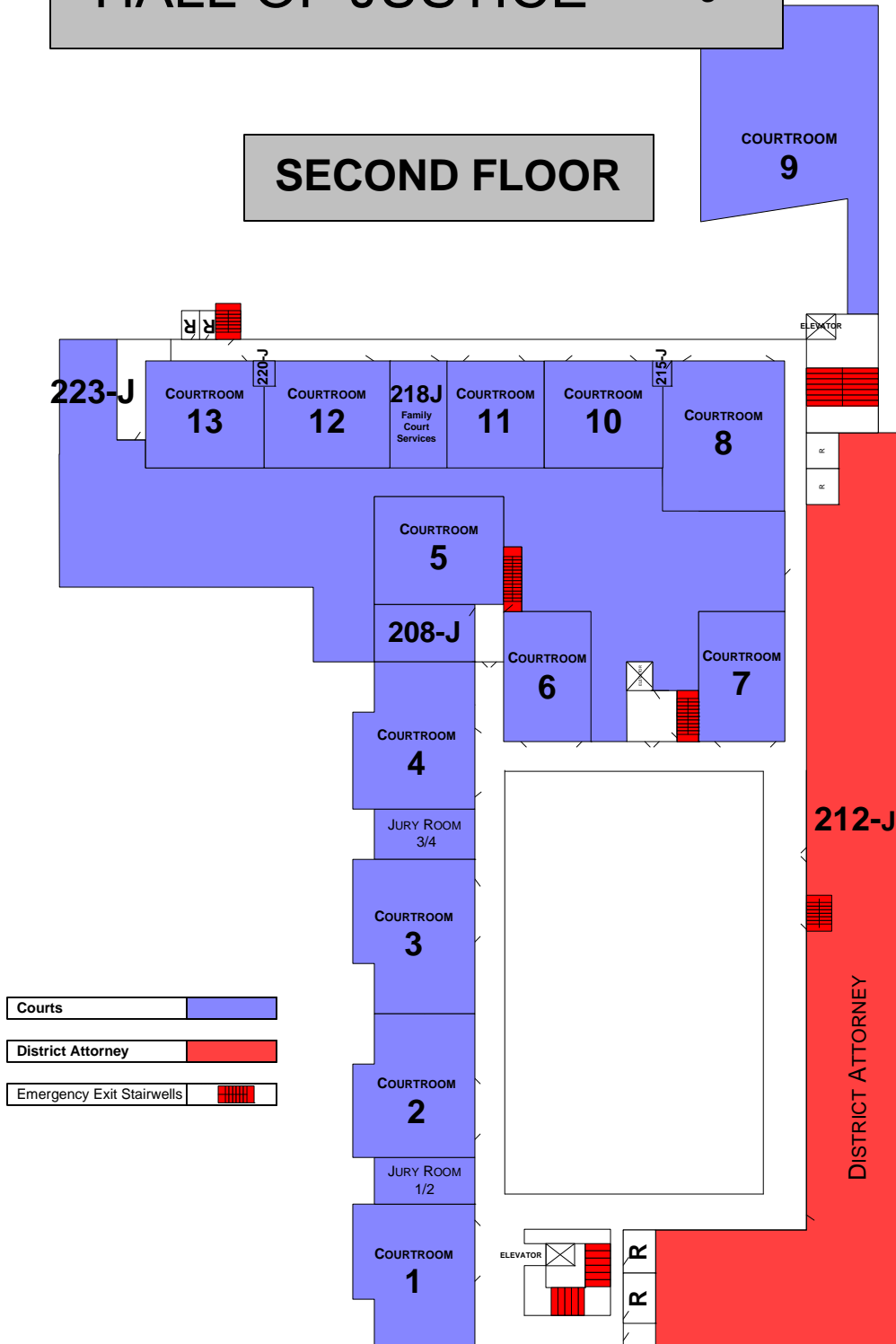


SONOMA COUNTY HALL OF JUSTICE



SECOND FLOOR



SONOMA COUNTY HALL OF JUSTICE

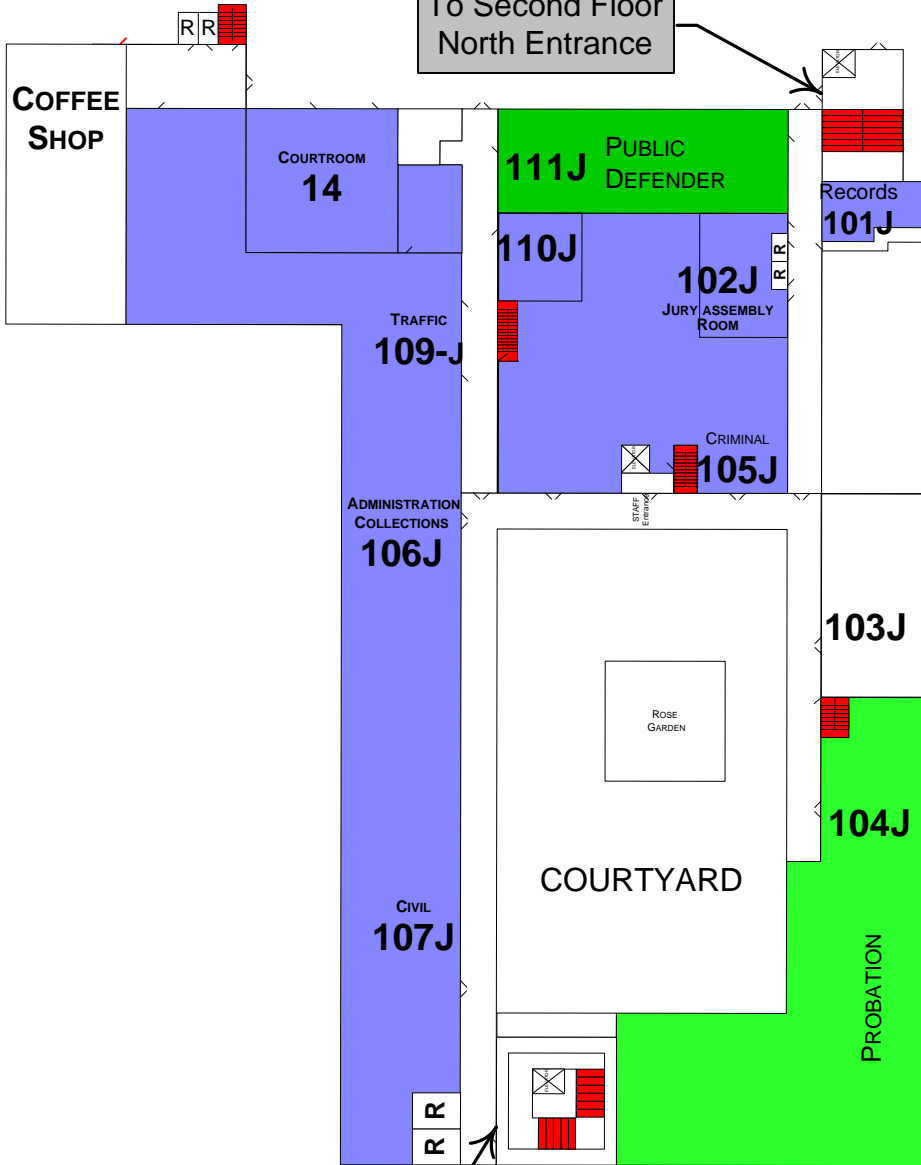
600 ADMINISTRATION DRIVE



COURTROOM
15

FIRST FLOOR

To Second Floor
North Entrance



Courts	
Public Defender	
Probation	
Emergency Exit Stairwells	



To Second Floor
South Entrance

600 ADMINISTRATION DRIVE

ADMINISTRATION DRIVE